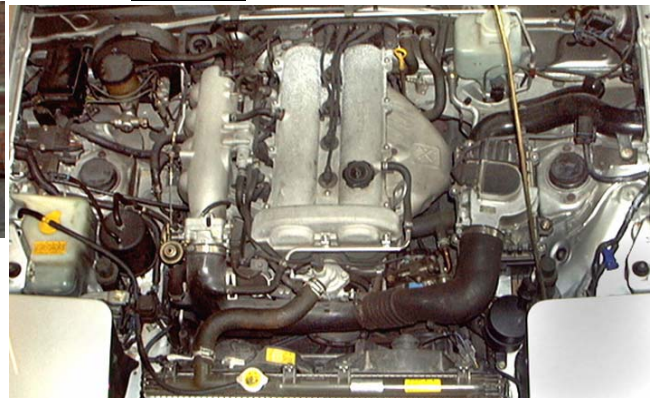
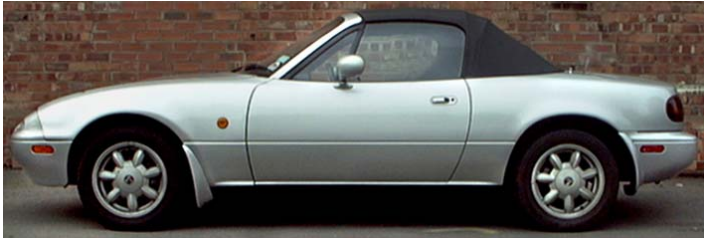


PLEASE READ THE INSTRUCTIONS CAREFULLY BEFORE FITTING THE KIT.



Your car and the engine bay should look like the ones in these pictures, if not then talk to your kit supplier. Should you still have a problem, call K&N customer services. Tel: 01925-636950. Fax: 01925-418948

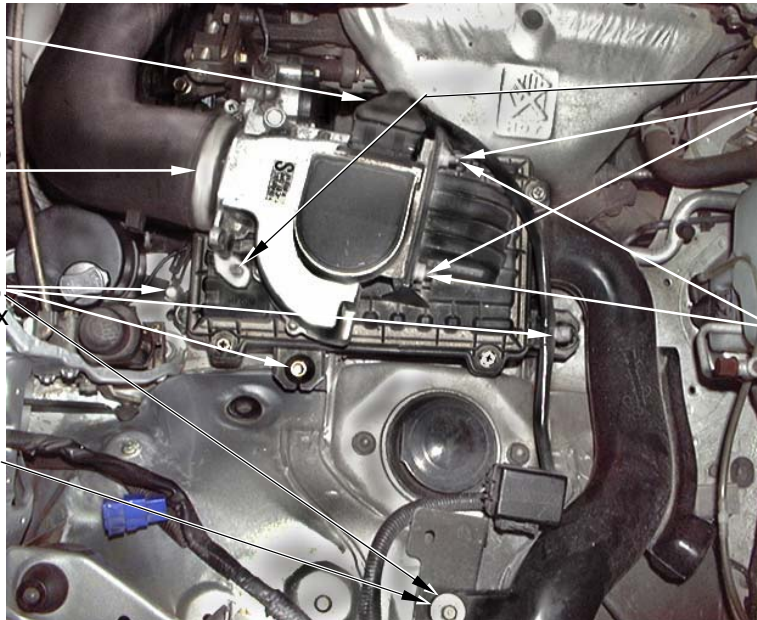
Photo A

1. Remove the AFM (Air Flow Meter) electrical harness plug.

2. Loosen the hose clip and slide off the hose.

3. Remove the 4 air box / intake mountings, then remove the air box and intake pipe.

4. Replace this screw to hold the diagnostic plug bracket in place.



5. Remove the AFM from the air box lid by undoing the 4 securing nuts and the screw.

6. Remove the 4 studs on the AFM. (Use 2 nuts locked together to remove the studs).

Photo B

1. Fit the new adapter and gasket onto the AFM using the 4 countersunk screws supplied.

2. Loosely fit the L' shaped bracket to the front air box mounting point using the original screw.

3. Loosely fit the straight bracket to the middle air box mounting point using the original nut.

4. Fit the AFM back into the intake hose, tighten the hose clip and reconnect up the electrical harness plug.

5. Fit the 2 brackets to the AFM as shown, Attach the L' shaped bracket to the original bracket mounting point using the original screw. (Ensure that the original bracket is fitted.)

6. Attach the flat bracket to the original bracket using the screw, nut flat washer and spring washer supplied. Tighten all of the securing screws and nuts on the brackets.

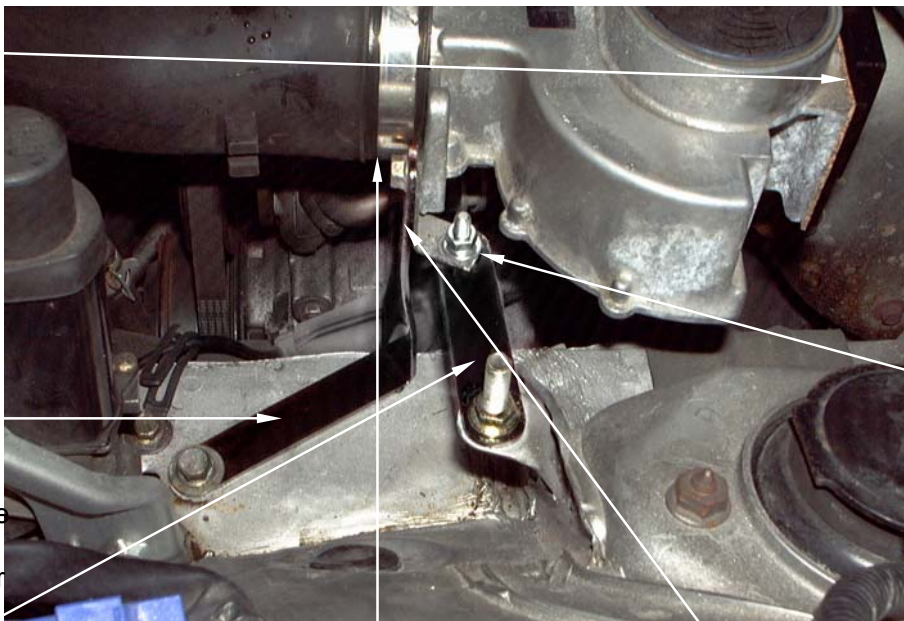
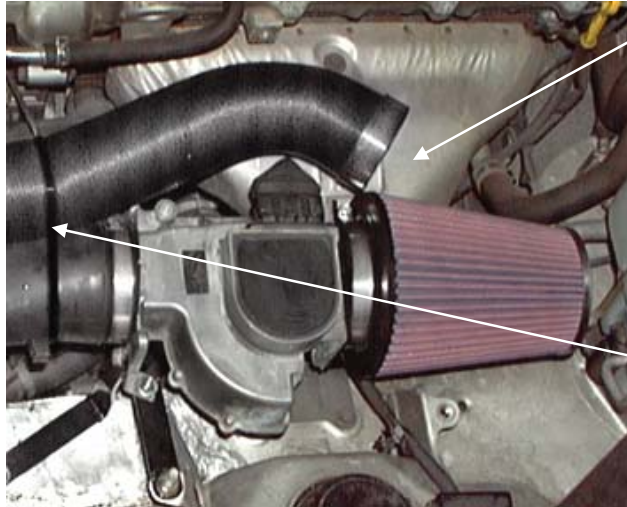


Photo C

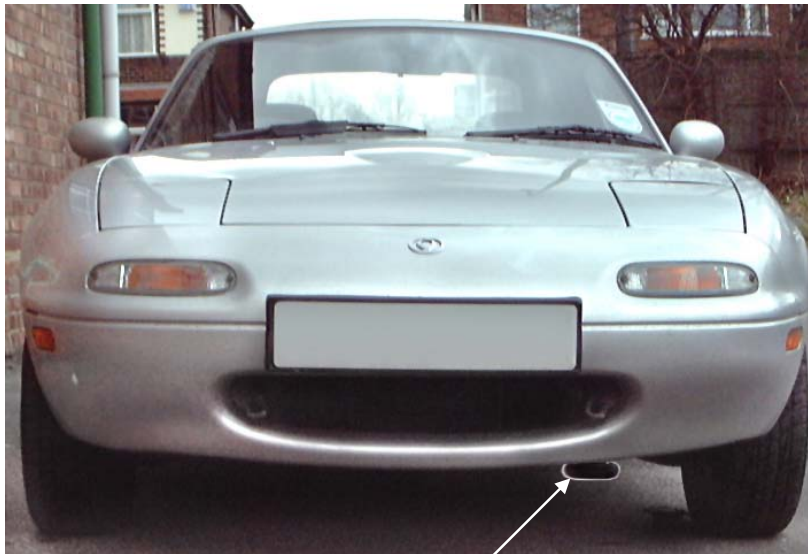
1. Degrease the filter neck. Fit the new filter onto the square adapter (fitted on the AFM), ensuring that the K&N logo is straight. Gently tighten the clip to the point where it is just possible to move the filter off the adapter. Push the filter back down and give the clip one full turn (360 degrees) **no more.** **Do not overtighten the clip.**



3. Secure the top of the flexi cold air hose approx. **10 cm / 4"** from the filter using a long plastic tie supplied. (Ensure the cold air hose clears the exhaust system).

2. Carefully lengthen the flexi cold air hose and feed the hose down to the under tray.

Photo D



Taking all of the necessary safety precautions as per the manufacturers instructions, raise the front of the car. Unclip the flap on the bottom of under tray and open the flap fully forward. Pierce / drill two holes in the lower under tray and secure the cold air hose to the tray using the long plastic ties supplied. Ovalise the end of the hose to increase ground clearance.

Tuning.

CAT. Cars. No adjustments are required.

An increase in fuel may be required if further engine modifications are to be carried out.

Filter maintenance.

Under normal conditions clean and reoil the filter at approx. 40,000 miles / 65,000 Km.

Use only K&N cleaner and oil and follow the instructions carefully.

K&N filters are pre-oiled ready to fit.

The advantage's of K&N's cold air intake system.

Cooler air being denser, will show positive improvements in power over filter systems that draw hot air from the engine bay

This Kit Should Contain:

- 1 x Clamp On Filter.
- 1 x #48 Hose Clip.
- 1 x Cold Air Hose Assembly
- 1 x Instruction Sheet
- 1 x Instruction Pack :-
 - 1 x K&N Window sticker
 - 1 x Filter Maintenance Sheet
 - 1 x Million Mile Warranty
 - 1 x Leaflet
- 1 x Fixing Kit :-
 - 1 x Adapter Gasket.
 - 4 x Countersunk Screws.
 - 1 x Flat Washer.
 - 1 x 6mm Spring Washer
 - 1 x M6 Screw.
 - 1 x M6 Nut.
 - 3 x Long Plastic Ties.
 - 1 x Adapter Plate.
 - 1 x Flat Bracket.
 - 1 x L' Shaped Bracket.

FITTING YOUR 57i KIT

If you are not fitting the kit **it is essential** that the person fitting the kit (eg. Mechanic) **carefully follows these particular instructions** even if they have fitted K&N kits before. This will save you both time and money. Kits fitted incorrectly may show a loss in performance, e.g. the positioning of the essential cold air hose, (flexi expandable and rubber hoses are used).

A final check under the bonnet, by yourself with the instructions, would seem sensible.

